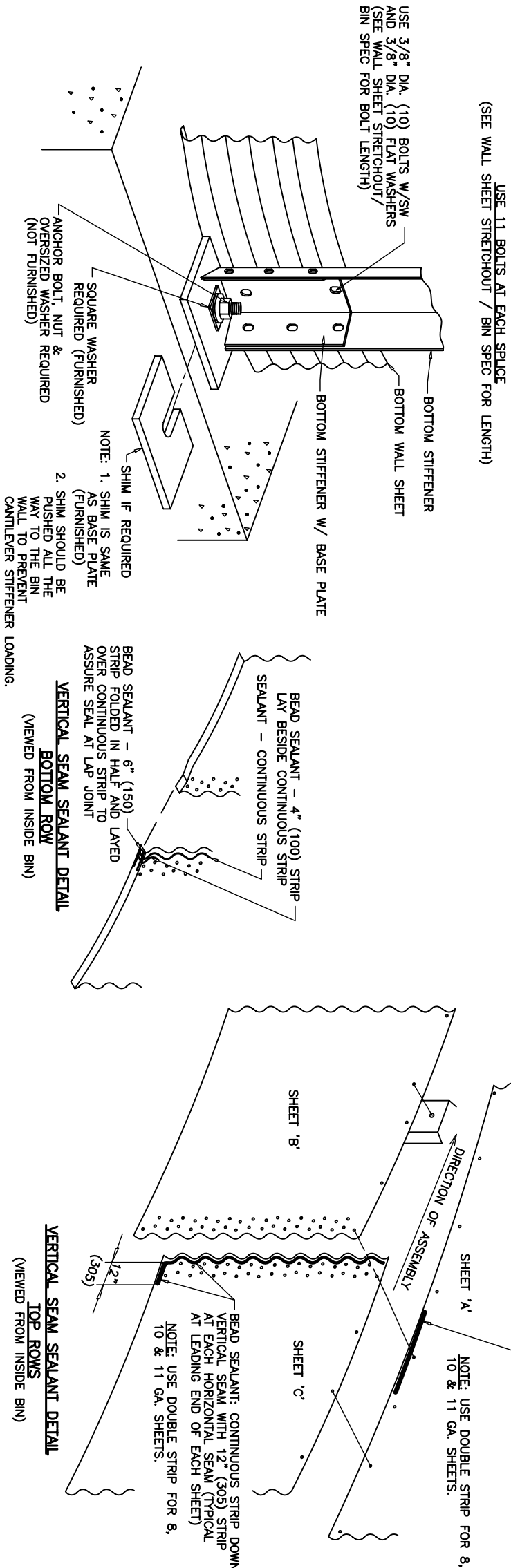
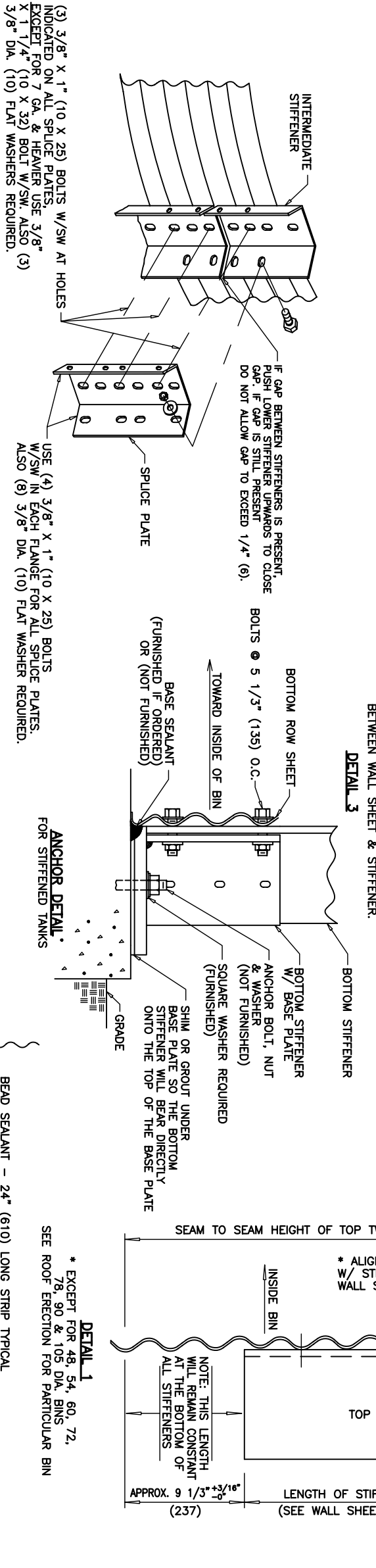
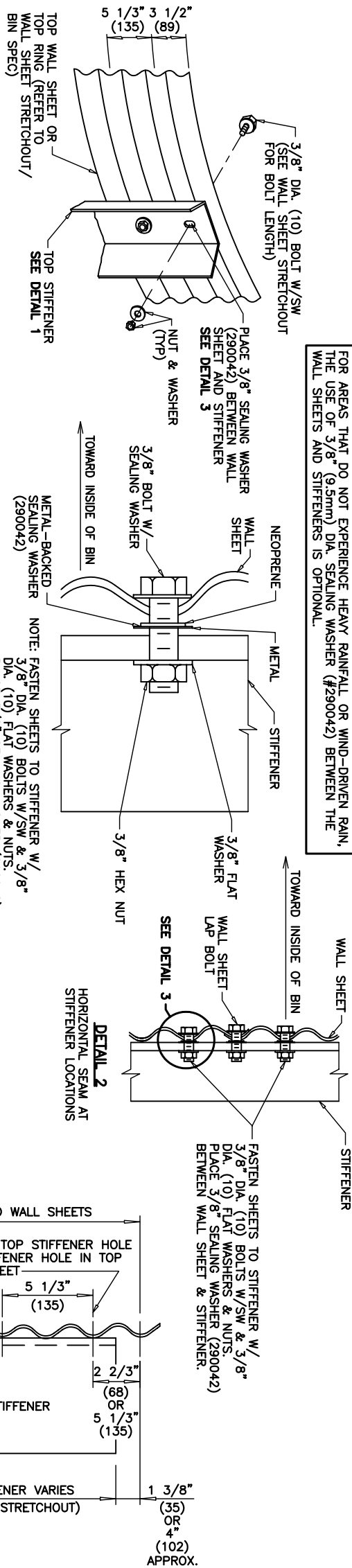


FOR AREAS THAT DO NOT EXPERIENCE HEAVY RAINFALL OR WIND-DRIVEN RAIN, THE USE OF 3/8" (9.5mm) DIA. SEALING WASHER (#290042) BETWEEN THE WALL SHEETS AND STIFFENERS IS OPTIONAL.



S&E GRADE 8 BOLTS	S&E GRADE 8.2 BOLTS
S&E GRADE 8 & S&E GRADE 8.2 BOLTS ARE ESSENTIALLY EQUAL FOR SILO ERECTION.	
S&E GRADE 5 BOLTS	S&E GRADE 2 BOLTS
ASTM A325 BOLTS	ASTM A307 BOLTS
USED FOR STRUCTURAL CONNECTIONS	ALLOWED ONLY FOR ANCHOR BOLTS
CONTACT SCAFCO ENGINEERING DEPARTMENT BEFORE SUBSTITUTING ANY BOLTS ON SILOS.	

INSTRUCTIONS

VERTICAL SEAM BEAD SEALANT:

1. PLACE 24" (610) STRIPS ALONG THE BOTTOM FLANGE OF SHEET 'A' WHERE THE TWO LOWER SHEETS WILL OVERLAP.
 2. ATTACH SHEET 'C' TO SHEET 'A'.
 3. RUN A CONTINUOUS STRIP OF BEAD SEALANT DOWN THE VERTICAL SEAM AND AROUND THE CORNER OF SHEET 'C'.
 4. ATTACH SHEET 'B'.
 5. APPLY SEALANT TO SHEET 'B' IN THE SAME MANNER AS SHEET 'C'.
 6. CONTINUE THIS PROCEDURE AROUND THE BIN FOR ALL WALL SHEET ROWS, WITH THE EXCEPTION OF THE BOTTOM ROW.
- * USE A DOUBLE STRIP FOR 8, 10, AND 11, GAUGE SHEETS. (3.68, 3.23, 2.90)

ANCHORING BIN:

1. SWEEP CONCRETE TO REMOVE EXCESS DUST AND WIPE UNDER-SIDE OF BOTTOM ROW SHEET TO REMOVE DIRT AND EXCESS OIL.
2. USE CONSEAL GS-102, ALUMINIZED ROOFING ASPHALT, OR OTHER APPROVED MATERIAL FOR SEALING BASE OF BIN.
3. WITH BIN HELD ONE TO TWO INCHES (25 TO 50) ABOVE FOUNDATION, TROWEL SEALANT UNDER FLANGE. (SEE ANCHOR DETAIL.)
4. IF CONCRETE IS UNEVEN PLACE EXTRA SEALANT ON TOP TO ASSURE SEAL.
5. SLOWLY LOWER BIN AND TIGHTEN ANCHOR BOLTS.
6. TROWEL SEALANT INSIDE AND OUTSIDE TO ASSURE WATER-TIGHT SEAL WITH THE FOUNDATION.

STIFFENER INSTALLATION:

1. REFER TO WALL SHEET STRETCHOUT / BIN SPEC DRAWING FOR PROPER PLACEMENT OF STIFFENERS AND SPLICE PLATES.
2. PLACE THE TOP STIFFENER SO TOP HOLE IN THE STIFFENER IS IN LINE WITH THE TOP STIFFENER HOLE OF THE WALL SHEET.
3. DO NOT ALLOW STIFFENER TO SLIP DOWN WHILE BOLTING. FINGER TIGHTEN BOLTS, FORCE STIFFENER UPWARDS WITH DRIFT PIN AS FAR AS THE BOLTS WILL ALLOW. HOLD THE STIFFENER IN POSITION AND TIGHTEN BOLTS.
4. CONTINUE THIS PROCEDURE THROUGH THE STIFFENER AND SPLICE PLATE INSTALLATION. THE GAP BETWEEN STIFFENERS SHOULD NOT EXCEED 1/4" (6). MAKE SURE STIFFENERS AND SPLICE PLATES ARE THE PROPER GAUGE AS SHOWN ON THE WALL SHEET STRETCHOUT / BIN SPEC DRAWING. ALL PARTS ARE COLOR CODED.
5. SHIM BASE PLATES AS REQUIRED TO COMPENSATE FOR UNEVEN FOUNDATION AND GAPS BETWEEN STIFFENERS. BOTTOM FLANGE OF BIN SHOULD BE BEARING ON FOUNDATION.



SCAFCO Grain Systems Company
6200 E. Main Avenue
P.O. Box 11215
Spokane, WA 99211-1215, USA
Tel: 509-535-1571 * Fax: 509-535-9130 * mail@scfco.com * www.scfco.com

EXTERNALLY STIFFENED BINS OR SILOS
INSTALLATION AND SEALANT DETAILS

BY	DATE	DRAWING NO.:	REV.
DRAWN	SMB	17APR95	ED00002EX
CHECKED			
APPROVED	JT	28SEP98	SCALE: NTS SHEET: 1 OF 1